

OKSAN[®]
RUBBER

confidence
sturdiness
quality

PRODUCT
CATALOGUE



www.oksankaucuk.com.tr

www.oksankaucuk.com.tr

ABOUT Us

OKSAN is one of the largest aftermarket manufacturer for engine and shock absorber mountings, steering wheel and axle bellows, wishbone arm and link stabilizer bushes, ball joint dust covers, and another industrial rubber parts of passenger and light commercial vehicles in its own sector. Oksan, since the day the production started in 1980, as a result of targeting market and customer desires, we could be able to reach the highest level of quality in the entire company. All the necessary investments to maintain and complete activities have been realized without cease. In 2004, as a natural result of all these progresses, ISO 9001 Quality Management System certificate could have been awarded until today and in October 2008 the re-certification was upgraded to ISO 9001:2008 revision.



ISO
9001
CERTIFICATION
EUROPE™



42 years of experience



www.oksankaucuk.com.tr



OKSAN[®]
RUBBER



MERCEDES-BENZ



AXLE BELLOWS

ME154



COMPATIBLE VEHICLES :

SL (R129) 1993-2001
SL (R107) 1986-1989
S-SERISI Coupe (C126) 1985-1987
S SERIES (W140) 1991-1998
S SERIES (W126) 1979-1991

OEM NO : A124 350 01 37, A124 350 02 37, A124 357 01 91, A124

AXLE BELLOWS, KIT

ME154-K



COMPATIBLE VEHICLES :

SL (R129) 1993-2001
SL (R107) 1986-1989
Sedan (W124) 1984-1993
S-SERISI Coupe (C126) 1985-1987
S SERIES (W140) 1991-1998

OEM NO : A124 350 01 37, A124 350 02 37, A124 357 01 91, A124

AXLE BELLOWS

ME155



COMPATIBLE VEHICLES :

Sedan (W124) 1984-1993
124 T-Model (S124) 1986-1993
190 (W201) 1986-1993
C SERIES (W202) 1993-2000
E SERIES (W124) 1993-1995

OEM NO : A201 350 00 37, A201 350 01 37, A201 357 00 91, A201

AXLE BELLOWS, KIT

ME155-K



COMPATIBLE VEHICLES :

Sedan (W124) 1984-1993
E-SERISI T-Model (S124) 1993-1996
E SERIES (W124) 1993-1995
C SERIES (W202) 1993-2000
190 (W201) 1986-1993

OEM NO : A201 350 00 37, A201 350 01 37, A201 357 00 91, A201

STEERING BOOT

ME156



COMPATIBLE VEHICLES :

E SERIES (W210) 1998-2002
E-SERISI Platform şasi (VF210) 1999-2002
E SERIES Station Wagon (S210) 1996-1999

OEM NO : A210 460 23 00, 210 460 23 00

AXLE BOOT, INNER-RIGHT

ME159



COMPATIBLE VEHICLES :

V-SERISI (638/2) V 280 (638.244, 638.294) 1997-2003
VIANO (W639) 2003-2010

OEM NO : A000 330 13 85, 000 330 13 85

MOUNTING, DIFFERENTIAL

ME174



COMPATIBLE VEHICLES :

VIANO (W639) 2003-2010
VITO / MIXTO Panelvan/Van (W639) 2003-2012

OEM NO : A6393500842, A6393506101, A6393530347

AXLE BOOT, INNER

VW118



COMPATIBLE VEHICLES :

V-SERISI (638/2) V 280 (638.244, 638.294) 1997-2003
VIANO (W639) 2003-2010
VITO / MIXTO Panelvan/Van (W639) 2003-2012

OEM NO : 1J0 498 201 E, 3D0 598 201, 701 498 201, 7H0 498 201,

AXLE BOOT, INNER,KIT

VW118-K



COMPATIBLE VEHICLES :

VITO / MIXTO Panelvan/Van (W639) 2003-2012
VIANO (W639) 2003-2010
V-SERISI (638/2) V 280 (638.244, 638.294) 1997-2003

OEM NO : 1J0 498 201 E, 3D0 598 201, 701 498 201, 7H0 498 201,

SHOCK ABSORBER DUST BELLOW

RE300



COMPATIBLE VEHICLES :

CITAN Mixto (Double Cabin) (W415) 2012-2021
CITAN Kombi (W415) 2012-2021

OEM NO : 8200591288

SHOCK ABSORBER DUST BELLOW

VW106



COMPATIBLE VEHICLES :
SPRINTER 3,5-t Panelvan/Van (906)
2006-

OEM NO : 2E0 413 175 A, 2E0 413 175 B, A906 323 01 92, A906 323

STRUT MOUNTING, FRONT

ME077



COMPATIBLE VEHICLES :
E SERIES (W124) 1993-1995

OEM NO : 1243201444

STRUT MOUNTING, FRONT UPPER

ME092



COMPATIBLE VEHICLES :
VITO Bus (639) 2003-
VIANO (W639) 2003-2010

OEM NO : 6393230520, A6393230520, 6393230120, A6393230120,

STRUT MOUNTING,FRONT

ME094



COMPATIBLE VEHICLES :
SPRINTER 3,5-t Panelvan/Van (906)
2006-

OEM NO : 9063230520, 2E0407181C

FRONT SUSPENSION SHOCK ABSORBER

ME170



COMPATIBLE VEHICLES :
V-CLASS (638/2) 1996-2003
VITO Box (638) 1997-2003
VITO Bus (638) 1996-2003

OEM NO : 6383230320, 6383230420

FRONT SUSPENSION SHOCK ABSORBER

OP653



COMPATIBLE VEHICLES :
T1 Autobus (601) 1977-1996

OEM NO : 344513, 90268464

SHOCK ABSORBER MOUNTING, WITH BEARING

RE026-B



COMPATIBLE VEHICLES :
CITAN Kombi (W415) 111 CDI 2012-
CITAN Mixto (Double Cabin) (W415)
2012-2021

OEM NO : 543A05333R, 77 01 209 840, 82 00 591 283, 415 323 00

BUSH FOR LOWER WISHBONE

AU100



COMPATIBLE VEHICLES :
Sedan (W124) 1984-1993

OEM NO : 857407181, 8A0407181

RUBBER MOUNTING CONTROL ARM,FRONT,

ME010



COMPATIBLE VEHICLES :
CLK (C209) 2002-2009
C SERIES (W203) 2000-2007

OEM NO : 2033330314, 2033330914

RUBBER MOUNTING CONTROL ARM,FRONT,

ME011



COMPATIBLE VEHICLES :
CLS (C219) 2004-2012
E SERIES (W211) 2002-2011

OEM NO : 2113331014, 2113332514, 2113332814

BUSH FOR WISHBONE

ME013



COMPATIBLE VEHICLES :
190 (W201) 1986-1993

OEM NO : 1243524365, 2013528865

RUBBER MOUNTING CONTROL ARM,FRONT,

ME017



COMPATIBLE VEHICLES :
GLK (X204) 2008-2015
E-CLASS CONVERTIBLE (A207) 2010-
C-CLASS TMODEL (S204) 2007-2014
C-CLASS COUPE (C204) 2011-2015
SLK (R171) 2004-2011

OEM NO : 2033330214, 2033331014, 211 333 29 14, 204 333 10 14

BUSH FOR WISHBONE

ME037



COMPATIBLE VEHICLES :
CLS (C219) 2004-2012
E SERIES (W211) 2002-2011
SL (230) 1999-2012

OEM NO : 211 333 10 14, 211 333 25 14, 211 333 28 14

RUBBER MOUNTING CONTROL ARM, REAR

ME071



COMPATIBLE VEHICLES :
W115 1968-1977
W123 1976-1981
S SERIES (W116) 1972-1980
S SERIES (W126) 1979-1991

OEM NO : 1263520165

RUBBER MOUNTING CONTROL ARM,FRONT,

ME072



COMPATIBLE VEHICLES :
W123 1976-1981
CLS (C219) 2004-2012
E SERIES (W211) 2002-2011
S SERIES (W126) 1979-1991

OEM NO : 2113331114

BUSH FOR REAR CONTROL ARM

ME100



COMPATIBLE VEHICLES :
190 (W201) 1986-1993
C SERIES (W202) 1993-2000
C SERIES Combi (S202) 1996-
CABRIOLET (A124) 1992-1993
COUPE (C124) 1987-1993

OEM NO : 2013523665

CONTROL ARM BUSHING

ME1006



COMPATIBLE VEHICLES :
A SERIES (W168) 1998-2004

OEM NO : 1683330614, 1683330214, 1683330014, A1683330014,

BUSH FOR WISHBONE

ME1007

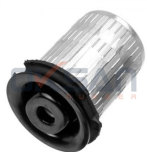


COMPATIBLE VEHICLES :
C SERIES (W204) 2007-2014

OEM NO : 2043331114, 2213331914

CONTROL ARM BUSHING

ME1009



COMPATIBLE VEHICLES :
E SERIES (W210) 1998-2002

OEM NO : 2103336814, A2103336814, 2103336014, A2103336014

CONTROL ARM BUSHING, KIT

ME1010

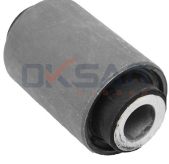


COMPATIBLE VEHICLES :
C SERIES (W202) 1993-2000

OEM NO : 2023300075

CONTROL ARM BUSHING

ME1011



COMPATIBLE VEHICLES :

190 (W201) 1986-1993
C SERIES (W202) 1993-2000
C SERIES (W203) 2000-2007
E SERIES (W124) 1993-1995
E SERIES (W210) 1998-2002

OEM NO : 1243527065, 1243528465, 2023520065, 2023520165,

CONTROL ARM BUSHING

ME1013



COMPATIBLE VEHICLES :

190 (W201) 1986-1993
C COUPE (CL203) 2001-2008
C SERIES (W202) 1993-2000
C SERIES (W203) 2000-2007
C SERIES (W204) 2007-2014

OEM NO : 2013520027, A2013520027, 2043520027, A2043520027,

CONTROL ARM BUSHING

ME1020



COMPATIBLE VEHICLES :

C SERIES (W205) 2014-2018
C SERIES (A205) 2016-
C SERIES (S205) 2014-
E SERIES (W213) 2016-
E SERIES (A238) 2017-

OEM NO : 2053302107, 2053306301, 2053306401, 2053302207,

BUSH FOR WISHBONE

ME1023



COMPATIBLE VEHICLES :

E-SERISI Cabrio (A207) 2010-
C SERIES (W204) 2007-2014
C SERIES T-MODEL (S204) 2007-2014
E SERIES Coupe (C207) 2009-

OEM NO : 2043330414, 2043306711, 2043306811, A2043330414,

BUSH FOR TRACK CONTROL ARM, REAR (Ø12)

ME105



COMPATIBLE VEHICLES :

190 (W201) 1986-1993
C SERIES (W202) 1993-2000
COMBI Station Wagon (S124) 1986-
1993
CLK (C208) 1997-2002

OEM NO : 1243523465, 1243500575, 1243529065

BUSH FOR TRACK CONTROL ARM, REAR (Ø13)

ME106



COMPATIBLE VEHICLES :

Tre Volumi (W124) 1985-1993
SLK (R170) 1996-2004
SL (R129) 1993-2001
E SERIES Station Wagon (S210) 1996-
1999

OEM NO : 1243523665

BUSH FOR TRACK CONTROL ARM, REAR

ME106A



COMPATIBLE VEHICLES :

190 (W201) 1986-1993
C SERIES (W202) 1993-2000
COMBI Station Wagon (S124) 1986-
1993
CLK (C208) 1997-2002

OEM NO : 1243523565, 1243500575

BUSH FOR UPPER WISHBONE

ME107



COMPATIBLE VEHICLES :

C SERIES (W202) 1993-2000
C SERIES Combi (S202) 1996-
CLK (C208) 1997-2002
CLK Cabriolet (A208) 1998-2002
E SERIES (W210) 1998-2002

OEM NO : 2023336214

BUSH FOR WISHBONE

ME121



COMPATIBLE VEHICLES :

M SERIES (W164) 2005-2011
R SERIES (W251,V251) 2005-2014

OEM NO : 1663330000, 1663310214, 1663330714, 2513330114,

BUSH FOR WISHBONE, KIT

ME127-K



COMPATIBLE VEHICLES :

A SERIES (W169) 2004-2012
B SERIES (W245) 2005-2011

OEM NO : 1693330114, 1693330014, 1693300607*

BUSH FOR TRACK CONTROL ARM, REAR

ME129



COMPATIBLE VEHICLES :
190 (W201) 1986-1993
C SERIES (W202) 1993-2000
C SERIES (W203) 2000-2007
C SERIES Station Wagon (S202) 1996-2001

OEM NO : 2103520965, 1243528665

SMALL BUSH FOR WISHBONE (SET)

ME130



COMPATIBLE VEHICLES :
B SERIES (W245) 2005-2011
A SERIES (W169) 2004-2012
A SERIES (W168) 1998-2004

OEM NO : 1693300607*, 1693300507*, 1693330114

CONTROL ARM BUSHING, SMALL

ME130V



COMPATIBLE VEHICLES :
B SERIES (W245) 2005-2011
A SERIES (W169) 2004-2012
A SERIES (W168) 1998-2004

OEM NO : 1693300607*, 1693300507*, 1693330114

BIG BUSH FOR WISHBONE

ME131



COMPATIBLE VEHICLES :
B SERIES (W245) 2005-2011
A SERIES (W169) 2004-2012
A SERIES (W168) 1998-2004

OEM NO : 1693300607*, 1693300507*, 1693330014, A1693330014,

BUSH FOR TRACK CONTROL ARM

ME132



COMPATIBLE VEHICLES :
S SERIES (W140) 1991-1998
S SERIES Coupe (C140) 1992-1999

OEM NO : 1403501453*, 1403501853*, 1403503053*, 1403503453*

BUSH FOR TRACK CONTROL ARM, REAR KIT

ME134-K



COMPATIBLE VEHICLES :
C SERIES (W202) 1993-2000
COMBI Station Wagon (S124) 1986-1993
CLK (C208) 1997-2002
CLK (C209) 2002-2009

OEM NO : 1243523465, 1243500575, 1243529065, 1243523565,

BUSH FOR UPPER WISHBONE (ABS)

ME135



COMPATIBLE VEHICLES :
C SERIES (W202) 1993-2000
C SERIES Combi (S202) 1996-2002
CLK (C208) 1997-2002
CLK Cabriolet (A208) 1998-2002
E SERIES (W210) 1998-2002

OEM NO : 2023337714

LOWER FRONT AXLE, CONTROL ARM BUSH

ME136



COMPATIBLE VEHICLES :
V-CLASS (638/2) 1996-2003
Vaneo (414) 2002-2005
Viano (W639) 2003-2010
VITO Box (638) 1997-2003
VITO Bus (638) 1996-2003

OEM NO : 6383330014, 6393330214, 6393330314

CONTROL ARM BUSH

ME138



COMPATIBLE VEHICLES :
SPRINTER 4-t Pianale piatto/Telaio (904) 1996-2006
SPRINTER 4-t Furgonato (904) 1996-2006
SPRINTER 4-t Autobus (904) 2000-

OEM NO : 9013330214, 2D0407140

BIG BUSH FOR WISHBONE

ME139



COMPATIBLE VEHICLES :
V-CLASS (638/2) 1996-2003
Vaneo (414) 2002-2005
Viano (W639) 2003-2010
VITO Box (638) 1997-2003
VITO Bus (638) 1996-2003

OEM NO : 6383330814

BUSH FOR TRACK CONTROL ARM, REAR KIT

ME140-K



COMPATIBLE VEHICLES :
 190 (W201) 1986-1993
 C SERIES (W202) 1993-2000
 C SERIES (W203) 2000-2007
 C SERIES Station Wagon (S202) 1996-2001

OEM NO : 1243523565, 1243500575, 2103520965, 1243528665

LOWER FRONT AXLE, CONTROL ARM BUSH KIT

ME141-K

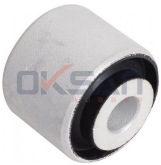


COMPATIBLE VEHICLES :
 V-CLASS (638/2) 1996-2003
 Vaneo (414) 2002-2005
 VIANO (W639) 2003-2010
 VITO Box (638) 1997-2003
 VITO Bus (638) 1996-2003

OEM NO : 6383330014, 6393330214, 6393330314, 6383330814

BUSH FOR WISHBONE

ME142



COMPATIBLE VEHICLES :
 S SERIES (W140) 1991-1998
 S SERIES (W220) 1999-2002
 S SERIES Coupe (C140) 1992-1999

OEM NO : 2103520665, 1403524565, 1403524865

BIG BUSH FOR WISHBONE, LEFT

ME144-L



COMPATIBLE VEHICLES :
 VIANO (W639) 2003-2010
 VITO Bus (639) 2003-
 VITO / MIXTO Box (W639) 2003-

OEM NO : 6393330X14, 6393301501*, 6393301207*, 6393301307*,

BIG BUSH FOR WISHBONE, RIGHT

ME144-R



COMPATIBLE VEHICLES :
 VITO / MIXTO Box (W639) 2003-
 VITO Bus (639) 2003-
 VIANO (W639) 2003-2010

OEM NO : 6393330X14, 6393301501*, 6393301207*, 6393301307*,

SMALL BUSH FOR WISHBONE

ME145



COMPATIBLE VEHICLES :
 VITO / MIXTO Box (W639) 2003-
 VITO Bus (639) 2003-
 VIANO (W639) 2003-2010

OEM NO : 6393331114, 6393301207*, 6393301501*, 6393301401*,

BUSH FOR WISBONE, LEFT

ME147-L

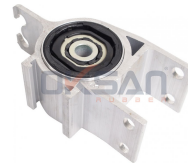


COMPATIBLE VEHICLES :
 GLA SERIES (X156) 2013-
 CLA COUPE (C117) 2013-
 CLA SHOOTING BRAKE 2015-

OEM NO : 2463330514

BUSH FOR WISBONE ,RIGHT

ME147-R



COMPATIBLE VEHICLES :
 CLA SHOOTING BRAKE 2015-
 CLA COUPE (C117) 2013-
 GLA SERIES (X156) 2013-

OEM NO : 2463330614

BUSH FOR WISBONE BIG

ME148



COMPATIBLE VEHICLES :
 VITO TOURER (W447) 2014-
 VITO PANELVAN (W447) 2014-
 VITO MIXTO (W447) 2014-
 V SERIES (W447) 2014-

OEM NO : 4473330514

BUSH FOR WISHBONE, KIT

ME149



COMPATIBLE VEHICLES :
 GLA SERIES (X156) 2013-
 CLA COUPE (C117) 2013-
 CLA SHOOTING BRAKE 2015-

OEM NO : 2463330114, A2463330114, 2463330114S1

CONTROL ARM BUSHING

ME149A



COMPATIBLE VEHICLES :
CLA COUPE (C117) 2013-
CLA SHOOTING BRAKE 2015-
GLA SERIES (X156) 2013-

OEM NO : 2463330114, A2463330114

CONTROL ARM BUSHING, RIGHT

ME150-L



COMPATIBLE VEHICLES :
CLA SHOOTING BRAKE 2015-
CLA COUPE (C117) 2013-
B-CLASS (W246) 2011-
A-CLASS (W176) 2012-

OEM NO : 2463330014, 2463330100, 54501 5DA0A*

CONTROL ARM BUSHING, RIGHT

ME150-R



COMPATIBLE VEHICLES :
CLA SHOOTING BRAKE 2015-
CLA COUPE (C117) 2013-
A-CLASS (W176) 2012-
B-CLASS (W246) 2011-

OEM NO : 2463330200, 2463330214, 54500 5DA0A*

CONTROL ARM BUSHING

ME152



COMPATIBLE VEHICLES :
SPRINTER 4-t Panelvan/Van (907, 910)
2018-
SPRINTER 3-t Platform şasi (910, 907)
2018-
SPRINTER 3-t Panelvan/Van (910)

OEM NO : 9103302500*, A9103302500*

CONTROL ARM BUSHING,BIG

ME153



COMPATIBLE VEHICLES :
SPRINTER 4-t Panelvan/Van (907, 910)
2018-
SPRINTER 3-t Platform şasi (910, 907)
2018-
SPRINTER 3,5-t Panelvan/Van (907,

OEM NO : 910 330 25 00*, 910 330 26 00*

BUSH FOR WISHBONE,BIG,UNDER

ME160



COMPATIBLE VEHICLES :
SLK (R170) 1996-2004
C-CLASS (W202) 1993-2000
C-CLASS T-Model (S202) 1996-2001

OEM NO : A202 333 64 14, 202 333 64 14, 2023338414

BUSH FOR WISHBONE,SMALL,UNDER

ME161

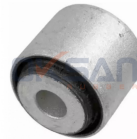


COMPATIBLE VEHICLES :
C-SERISI T-Model (S202 1996-2001
C-SERISI (W202) 1993-2000
SLK (R170) 2000-2004

OEM NO : 202 333 67 14, 202 333 87 14, A 202 333 67 14, A 202 333

BALANCE ARM BUSH

ME162



COMPATIBLE VEHICLES :
SL (R230) 600 2003-2012
SL (R230) 500 2001-2012
SL (R230) 350 2006-2012
SL (R230) 300 2009-2012
SL (R230) 280 2008-2012

OEM NO : 2303521565, 2043530043, 2053520508, 2043500029*,

BUSH FOR WISHBONE,FRONT

ME171



COMPATIBLE VEHICLES :
GLC (X253) 2015-2019
E SERIES (W213) 2016-
CLS (C257) 2018-
C-SERIES T-Model (S205) 2014-2018
C-CLASS Coupe (C205) 2015-2018

OEM NO : 2053306101, 2053330214, A2053306101, A2053306201,

BUSH FOR WISHBONE

ME172



COMPATIBLE VEHICLES :
S-CLASS Convertible (A217) 2015-
2019
E-CLASS T-Model (S213) 2016-2017
E-CLASS Coupe (C238) 2016-2017
E SERIES (A238) 2017-

OEM NO : 2223300207, A2313330114, 2313330314, A2223300107,

STEERING BOOT

ME1021



COMPATIBLE VEHICLES :
SPRINTER 2-t Autobus (901,902) 1995-2000
SPRINTER 2-t Minibüs/Otobüs (B901, B902) 1995-2006
SPRINTER 2-t Panelvan/Van (B901,

OEM NO : A9014605500, 9014605500

STEERING BOOT

ME175



COMPATIBLE VEHICLES :
E-CLASS (W210) 1995-2006

OEM NO : 2204601000, 2204630296SK

STEERING BOOT

RE058



COMPATIBLE VEHICLES :
R SERIES (W251,V251) 2005-2014

OEM NO : 7701474447, 1K0423831B, 5Q0423831

STEERING BOOT,CLAMP KIT

RE058-K



COMPATIBLE VEHICLES :
R SERIES (W251,V251) 2005-2014

OEM NO : 7701474447, 1K0423831B, 5Q0423831

STEERING BOOT

VW116



COMPATIBLE VEHICLES :
SPRINTER 5-t Panelvan/Van (B906) 2006-2016
SPRINTER 4,6-t Panelvan/Van (B906) 2006-2016
SPRINTER 3-t Panelvan/Van (B906)

OEM NO : 164 460 00 96, 906 460 00 96, A 164 460 00 96, A 906 460

EXHAUST RUBBER

CI074



COMPATIBLE VEHICLES :
S SERIES (W116) 1972-1980
190 (W201) 1986-1993

OEM NO : 1755.60, 82409205, 7610077, 60806026, 60801631

EXHAUST RUBBER

ME1018



COMPATIBLE VEHICLES :
S SERIES (W116) 1972-1980
190 (W201) 1986-1993
S SERIES (W126) 1979-1991

OEM NO : 1074920082, A1074920082, 1104920082, A1104920082

EXHAUST RUBBER

ME1019



COMPATIBLE VEHICLES :
190 (W201) 1986-1993
E SERIES (W124) 1993-1995

OEM NO : 2014920116

ENGINE MOUNTING,FRONT, BOTH SIDE, OLD

ME043



COMPATIBLE VEHICLES :
T1 Pianale piatto/Telaio (601) 1977-1996
T1 Furgonato (601) 1982-1996
T1 Autobus (602) 1989-1996
T1 Autobus (601) 1977-1996

OEM NO : 6012420013

ENGINE MOUNTING,FRONT, BOTH SIDE

ME047



COMPATIBLE VEHICLES :
T1 Autobus (601) 1977-1996
T1 Autobus (602) 1989-1996
T1 Furgonato (601) 1982-1996
T1 Pianale piatto/Telaio (601) 1977-1996

OEM NO : 6012400917

ENGINE MOUNTING,FRONT, BOTH SIDE

ME051

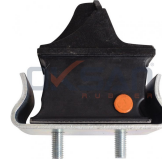


COMPATIBLE VEHICLES :
SPRINTER 2-t Autobus (901,902) 1995-2000
SPRINTER 2-t Furgonato (901,902) 1995-2006
SPRINTER 2-t Pianale piatto/Telaio

OEM NO : 9012412413

ENGINE MOUNTING,FRONT, BOTH SIDE

ME052



COMPATIBLE VEHICLES :
SPRINTER 2-t Autobus (901,902) 1995-2000
SPRINTER 2-t Furgonato (901,902) 1995-2006
SPRINTER 2-t Pianale piatto/Telaio

OEM NO : 9012412513

ENGINE MOUNTING

ME097



COMPATIBLE VEHICLES :
C SERIES (W202) 1993-2000
SLK (R170) 1996-2004

OEM NO : 2022401617, 2022401017, 2022400117, A2022400117,

ENGINE MOUNTING

ME117



COMPATIBLE VEHICLES :
190 (W201) 1986-1993
E SERIES (W124) 1993-1995

OEM NO : 1242401917, 2012401917, 2012402017, 2012402917,

ENGINE MOUNTING

ME122



COMPATIBLE VEHICLES :
C SERIES (W204) 2007-2014
CLS (C218) 2011-
E SERIES (W212) 2009-2016

OEM NO : 2042400917

ENGINE MOUNTING

VW140



COMPATIBLE VEHICLES :
SPRINTER 5-t Platform şasi (B906) 2006-2016
SPRINTER 5-t Panelvan/Van (B907) 2018-2019
SPRINTER 4-t Platform şasi (B907,

OEM NO : 68005193AA, A906 241 11 13, A906 241 12 13, A906 241

CLUTCH TIRE

ME157



COMPATIBLE VEHICLES :
190 (W201) 1986-1993
190 (W201) Turbo-D 2.5 1988-1993

OEM NO : 2012910282

BRAKE CLUTCH TIRE

ME158



COMPATIBLE VEHICLES :
A-SERISI (W177) 2018-
A-SERISI (W169) 2004-2012
190 (W201) 1986-1993
A-SERISI (W168) 1997-2004
A-SERISI (W176) 2012-2018

OEM NO : 123 291 00 82

PROPELLER SHAFT CENTER SUPPORT

ME044



COMPATIBLE VEHICLES :
SPRINTER 2-t Autobus (901,902) 1995-2000
SPRINTER 2-t Furgonato (901,902) 1995-2006
SPRINTER 2-t Pianale piatto/Telaio

OEM NO : 9014110412

SHAFT VIBRATION ABSORBER, BALANCED

ME053



COMPATIBLE VEHICLES :
190 (W201) 1986-1993
C SERIES (W202) 1993-2000

OEM NO : 2024111447

SHAFT VIBRATION ABSORBER, BALANCED

ME054



COMPATIBLE VEHICLES :
E SERIES (W124) 1993-1995
190 (W201) 1986-1993

OEM NO : 2024111747, 2014113047

SHAFT VIBRATION ABSORBER, BALANCED

ME055



COMPATIBLE VEHICLES :
SPRINTER 2-t Autobus (901,902) 1995-2000
SPRINTER 2-t Furgonato (901,902) 1995-2006
SPRINTER 2-t Pianale piatto/Telaio

OEM NO : 6114110247

PROPELLER SHAFT CENTER SUPPORT

ME057



COMPATIBLE VEHICLES :
190 (W201) 1986-1993

OEM NO : 2014100581

PROPELLER SHAFT CENTER SUPPORT

ME058



COMPATIBLE VEHICLES :
T1 Pianale piatto/Telaio (601) 1977-1996
T1 Furgonato (601) 1982-1996
T1 Autobus (602) 1989-1996
T1 Autobus (601) 1977-1996

OEM NO : 6014101710, 601 410 21 10, 601 410 50 10

SHAFT VIBRATION ABSORBER, BALANCED

ME059



COMPATIBLE VEHICLES :
C SERIES (W202) 1993-2000
190 (W201) 1986-1993

OEM NO : 2024111347

PROPELLER SHAFT CENTER SUPPORT

ME1014



COMPATIBLE VEHICLES :
SPRINTER 3,5-t Panelvan/Van (906) 2006-
SPRINTER 4,6-t Box (906) 2006-
SPRINTER 5-t Box (906) 2006-

OEM NO : 9064100381, A9064100381, 9064100581, 9064100781,

SHAFT HANGER CHOCK

ME169



COMPATIBLE VEHICLES :
SPRINTER 4-t Platform şasi (B904) 1996-2006
SPRINTER 4-t Panelvan/Van (B904) 1996-2006
SPRINTER 3-t Platform şasi (B903)

OEM NO : 5104574AA, 9014110415, 9034100010, A9014110415,

GEARBOX MOUNTING

ME068



COMPATIBLE VEHICLES :
100D 1992-
150D 1994-

OEM NO : 6312420113

GEARBOX MOUNTING

ME070



COMPATIBLE VEHICLES :
SPRINTER 4-t Pianale piatto/Telaio (904) 1996-2006
SPRINTER 4-t Furgonato (904) 1996-2006
SPRINTER 4-t Autobus (904) 2000-

OEM NO : 9012421413, 9012421513, 2D0399201

TRANSMISSION MOUNTING

ME095



COMPATIBLE VEHICLES :
SPRINTER 3,5-t Panelvan/Van (906) 2006-

OEM NO : 6392420013, 2E0199379

BRACKET, TORSION BAR TO FRAME, FRONT,

ME036



COMPATIBLE VEHICLES :

207 1993-
210 1993-
307 1993-
308 1993-
407 1993-

OEM NO : 6013260326

BRACKET, TORSION BAR, FRONT

ME038



COMPATIBLE VEHICLES :

207 1993-
210 1993-
307 1993-
308 1993-
407 1993-

OEM NO : 6023260140

BRACKET, TORSION BAR TO FRAME, LEFT

ME039



COMPATIBLE VEHICLES :

COUPE (C124) 1987-1993
E SERIES Sedan (W124) 1985-1993
E SERIES (W124) 1993-1995

OEM NO : 1243230426

BRACKET, TORSION BAR TO FRAME, RIGHT

ME040



COMPATIBLE VEHICLES :

COUPE (C124) 1987-1993
E SERIES Sedan (W124) 1985-1993
E SERIES (W124) 1993-1995

OEM NO : 1243230526

BRACKET, TORSION BAR TO FRAME, LEFT

ME041



COMPATIBLE VEHICLES :

190 (W201) 1986-1993

OEM NO : 2013235540

BRACKET, TORSION BAR TO FRAME, RIGHT

ME042



COMPATIBLE VEHICLES :

190 (W201) 1986-1993

OEM NO : 2013235640

BRACKET, STABILIZER MOUNTING

ME099



COMPATIBLE VEHICLES :

VIANO (W639) 2003-2010
SPRINTER 3-t Platform şasi (B906)
2006-2016
SPRINTER 3-t Panelvan/Van (B906)
2006-2016

OEM NO : 9063261940, 000 995 34 02, 2E0511235F

STABILIZER MOUNTING,FRONT, 18 MM

ME001



COMPATIBLE VEHICLES :

SL (R129) 1993-2001
E-SERIS T-Model (S210) 1999-2003
CLK Cabriolet (A208) 1998-2002
CLK (C208) 1997-2002
190 (W201) 1986-1993

OEM NO : 1243232385, 1243234985

STABILIZER MOUNTING,FRONT

ME002



COMPATIBLE VEHICLES :

SPRINTER 3,5-t Panelvan/Van (906)
2006-
V SERIES (638/2) 1996-2003
VIANO (W639) 2003-2010
VITO Bus (639) 2003-

OEM NO : 6383230285

STABILIZER MOUNTING,REAR (Ø22 MM)

ME003



COMPATIBLE VEHICLES :

SPRINTER 2-t Autobus (901,902) 1995-
2000
SPRINTER 2-t Furgonato (901,902)
1995-2006
SPRINTER 2-t Pianale piatto/Telaio

OEM NO : 9013260081, 2D0511413A, 05104073AA

STABILIZER BAR RUBBER (Ø25 MM)

ME004



COMPATIBLE VEHICLES :
 SPRINTER 2-t Autobus (901,902) 1995-2000
 SPRINTER 2-t Furgonato (901,902) 1995-2006
 SPRINTER 2-t Pianale piatto/Telaio

OEM NO : 9043230085, 2D0411041B

STABILIZER MOUNTING, REAR, 27MM

ME005



COMPATIBLE VEHICLES :
 SPRINTER 4-t Pianale piatto/Telaio (904) 1996-2006
 SPRINTER 4-t Furgonato (904) 1996-2006
 SPRINTER 4-t Autobus (904) 2000-

OEM NO : 9043260881, 2D0511413B, 9063262481, 5118800AA

STABILIZER MOUNTING, FRONT, 20MM (OLD)

ME006/E



COMPATIBLE VEHICLES :
 SPRINTER 3,5-t Panelvan/Van (906) 2006-

OEM NO : 9063231485

STABILIZER MOUNTING, FRONT, 20MM (NEW)

ME006/Y



COMPATIBLE VEHICLES :
 SPRINTER 3,5-t Panelvan/Van (906) 2006-

OEM NO : 9063233685

STABILIZER BAR RUBBER

ME014



COMPATIBLE VEHICLES :
 E-SERISI (W210) 1995-2002

OEM NO : A210 323 14 85, A210 323 15 85, 210 323 14 85, 210 323

STABILIZER BAR RUBBER

ME015



COMPATIBLE VEHICLES :
 C SERIES (W203) 2000-2007

OEM NO : 2033230685, 2033232085, 2033230885

STABILIZER MOUNTING, REAR, 33MM

ME016



COMPATIBLE VEHICLES :
 SPRINTER 4-t Panelvan/Van (B904) 1996-2006
 SPRINTER 4-t Platform şasi (B904) 1996-2006

OEM NO : 05118801AA, 5118801AA, 904 326 10 81, A904 326 10 81,

STABILIZER BAR RUBBER, FRONT (Ø21 MM)

ME020



COMPATIBLE VEHICLES :
 CLK (C209) 2002-2009
 CLC-SERISI (CL203) 2008-2011
 C SERIES (W203) 2000-2007
 C-SERIES Coupe (CL203) 2001-2004
 C-SERIES T-Model (S203) 2001-2007

OEM NO : 2033230585, 2033232185

STABILIZER MOUNTING, FRONT (Ø21,5 MM)

ME021



COMPATIBLE VEHICLES :
 SPRINTER 4-t Pianale piatto/Telaio (904) 1996-2006
 SPRINTER 4-t Furgonato (904) 1996-2006
 SPRINTER 4-t Autobus (904) 2000-

OEM NO : 9013230185

STABILIZER MOUNTING, FRONT, 32MM

ME023

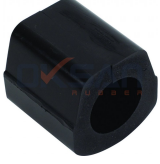


COMPATIBLE VEHICLES :
 T1 Autobus (601) 1977-1996
 T1 Autobus (602) 1989-1996
 T1 Furgonato (601) 1982-1996
 T1 Pianale piatto/Telaio (601) 1977-1996

OEM NO : 6023260282

STABILIZER MOUNTING,FRONT, 30MM

ME025

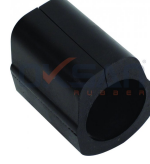


COMPATIBLE VEHICLES :
T1 Autobus (601) 1977-1996
T1 Autobus (602) 1989-1996
T1 Furgonato (601) 1982-1996
T1 Pianale piatto/Telaio (601) 1977-1996

OEM NO : 6023260882

STABILIZER MOUNTING,FRONT, OLD MODEL

ME026

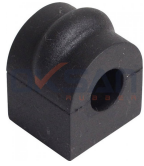


COMPATIBLE VEHICLES :
T1 Autobus (601) 1977-1996
T1 Autobus (602) 1989-1996
T1 Furgonato (601) 1982-1996
T1 Pianale piatto/Telaio (601) 1977-1996

OEM NO : 6023260482

STABILIZER MOUNTING,REAR, 13MM

ME027



COMPATIBLE VEHICLES :
190 (W201) 1986-1993
COUPE (C123) 1977-1985
E SERIES (W124) 1993-1995

OEM NO : 2013261081

STABILIZER MOUNTING,FRONT, 23MM

ME028



COMPATIBLE VEHICLES :
190 (W201) 1986-1993
E SERIES (W124) 1993-1995

OEM NO : 2013234885

STABILIZER MOUNTING,FRONT, 24MM

ME029



COMPATIBLE VEHICLES :
190 (W201) 1986-1993
COUPE (C123) 1977-1985
E SERIES (W124) 1993-1995

OEM NO : 1243231785

STABILIZER BUSHING,FRONT

ME030



COMPATIBLE VEHICLES :
150D 1994-
100D 1992-

OEM NO : 6313230044

STABILIZER BUSHING,FRONT

ME031



COMPATIBLE VEHICLES :
T1 Autobus (601) 1977-1996
T1 Autobus (602) 1989-1996
T1 Furgonato (601) 1982-1996
T1 Pianale piatto/Telaio (601) 1977-1996

OEM NO : 6023210250

STABILIZER BUSHING 12X32X36

ME032



COMPATIBLE VEHICLES :
SPRINTER 3,5-t Panelvan/Van (906)
2006-

OEM NO : 6673200073, 9793200173, 2E0 511 031, A979 320 01 73,

STABILIZER BUSHING,FRONT

ME033



COMPATIBLE VEHICLES :
G SERIES (W461) 1989-
S SERIES (W116) 1972-1980

OEM NO : 3093200073

STABILIZER BAR RUBBER

ME034



COMPATIBLE VEHICLES :
VIANO (W639) 2003-2010
VITO / MIXTO Panelvan/Van (W639)
2003-2012
VITO Minibüs/Otobüs (W639) 2003-

OEM NO : 6393231985, 6393230585, 6393231285

STABILIZER BAR RUBBER

ME035



COMPATIBLE VEHICLES :
M SERIES (W163) 1998-2005

OEM NO : 1633200144, 1633200044, 0501316011

STABILIZER MOUNTING, REAR, 30MM

ME088



COMPATIBLE VEHICLES :
SPRINTER 3-t Pianale piatto/Telaio (903) 1996-2006
SPRINTER 4-t Autobus (904) 2000-2006
SPRINTER 4-t Furgonato (904) 1996-

OEM NO : 9043260981

STABILIZER MOUNTING, FRONT, 23MM

ME093



COMPATIBLE VEHICLES :
SPRINTER 3,5-t Panelvan/Van (906) 2006-

OEM NO : 9063231685

STABILIZER BAR RUBBER, 13MM

ME1000



COMPATIBLE VEHICLES :
C SERIES (W203) 2000-2007

OEM NO : 2033260381

STABILIZER BAR RUBBER, 14MM

ME1001



COMPATIBLE VEHICLES :
C SERIES (W203) 2000-2007
C SERIES Tre Model (S203) 2001-2007
CLK (C209) 2002-2009
CLK Cabriolet (A209) 2003-2010

OEM NO : 2033260281

STABILIZER BAR RUBBER, 15MM

ME1002



COMPATIBLE VEHICLES :
C SERIES (W203) 2000-2007

OEM NO : 2033260181

STABILIZER BAR RUBBER, 17MM

ME1003



COMPATIBLE VEHICLES :
S SERIES (W140) 1991-1998
S SERIES Coupe (C140) 1992-1999

OEM NO : 1403261781

STABILIZER BAR RUBBER, 20MM

ME1004



COMPATIBLE VEHICLES :
A SERIES (W168) 1998-2004

OEM NO : 1683230385

STABILIZER BAR RUBBER,23MM

ME1005



COMPATIBLE VEHICLES :
Vaneo (414) 2002-2005
190 (W201) 1986-1993

OEM NO : 2013235085, 1243231985

STABILIZER BAR RUBBER (Ø19 MM)

ME113

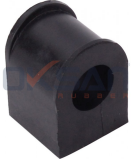


COMPATIBLE VEHICLES :
M SERIES (W163) 1998-2005

OEM NO : 1633200011

STABILIZER BAR RUBBER

ME114



COMPATIBLE VEHICLES :
VIANO (W639) 2003-2010
VITO Bus (639) 2003-
VITO / MIXTO Box (W639) 2003-

OEM NO : 6393261081, 6393260781, A6393261081, A6393260781

STABILIZER BAR RUBBER (Ø 18)

ME115



COMPATIBLE VEHICLES :
Sprinter 906 2006-

OEM NO : 906 326 22 81, 2E0 511 413 N, 2E0511413F, 2E0511413

STABILIZER BAR RUBBER (Ø 21)

ME116



COMPATIBLE VEHICLES :
SPRINTER 3,5-t Panelvan/Van (906)
2006-

OEM NO : 906 326 23 81, 2E0 511 413 P

STABILIZER BUSH, REAR

ME133



COMPATIBLE VEHICLES :
SPRINTER 2-t Autobus (901,902) 1995-
2000
SPRINTER 2-t Furgonato (901,902)
1995-2006
SPRINTER 2-t Pianale piatto/Telaio

OEM NO : 6013210250, 6013210350, 6013210450, 9013230285,

STABILIZER BAR RUBBER, FRONT (Ø22 MM)

ME165



COMPATIBLE VEHICLES :
124 Coupe (C124) 1992-1993
124 Sedan (W124) 1984-1993
190 (W201) 1986-1993

OEM NO : 1243232785, 1243235085, 2013234985

STABILIZER BAR RUBBER, FRONT (Ø22 MM)

ME166



COMPATIBLE VEHICLES :
C-SERIES Coupe (CL203) 2001-2004
C-SERIES T-Model (S203) 2001-2007
CLK (C209) 2002-2009
CLK Cabrio (A209) 2003-2010

OEM NO : A203 323 22 85, 203 323 22 85

STABILIZER BAR RUBBER (Ø23 MM)

RE296



COMPATIBLE VEHICLES :
CITAN Mixto (Double Cabin) (W415)
2012-2021
CITAN Kombi (W415) 2012-2021

OEM NO : 415 326 00 81, 546137404R

LINK STABILIZER MOUNTING

ME007



COMPATIBLE VEHICLES :
SPRINTER 2-t Autobus (901,902) 1995-
2000
SPRINTER 2-t Furgonato (901,902)
1995-2006
SPRINTER 2-t Pianale piatto/Telaio

OEM NO : 9013230285, 2D0411041A

BUSH FOR LINK STABILIZER, REAR

ME101



COMPATIBLE VEHICLES :
VITO Bus (638) 1996-2003
VITO Box (638) 1997-2003
V SERIES (638/2) 1996-2003

OEM NO : 6383260016*, 6383260116*

BUSH FOR LINK STABILIZER

ME1016



COMPATIBLE VEHICLES :
B SERIES (W245) 2005-2011
A SERIES (W169) 2004-2012

OEM NO : 1693200589*, A1693200589*

BIG BUSH FOR LINK STABILIZER, REAR

ME102



COMPATIBLE VEHICLES :

Tre Volumi (W124) 1985-1993
SLK (R170) 1996-2004
SL (R129) 1993-2001
E SERIES Station Wagon (S210) 1996-1999

OEM NO : 1243200289*

SMALL BUSH FOR LINK STABILIZER, REAR

ME103



COMPATIBLE VEHICLES :

Tre Volumi (W124) 1985-1993
SLK (R170) 1996-2004
SL (R129) 1993-2001
E SERIES Station Wagon (S210) 1996-1999

OEM NO : 1243200489*

BUSH FOR LINK STABILIZER, REAR

ME104



COMPATIBLE VEHICLES :

S SERIES Coupe (C140) 1992-1999
S SERIES (W220) 1999-2002
S SERIES (W140) 1991-1998

OEM NO : 1403200889*, 1403203589*

BUSH FOR LINK STABILIZER, FRONT

ME108



COMPATIBLE VEHICLES :

S SERIES (W220) 1999-2002

OEM NO : 2203201689*, 2203201589*

BUSH FOR LINK STABILIZER, FRONT

ME109



COMPATIBLE VEHICLES :

E SERIES T - Model (S211) 2003-2009
E SERIES (W211) 2002-2011
CLS (C219) 2004-2012

OEM NO : 2113201089*, 2113200989*, 2113203889*

BUSH FOR LINK STABILIZER, REAR

ME110



COMPATIBLE VEHICLES :

Tre Volumi (W124) 1985-1993
Sedan (W124) 1984-1993
E SERIES Station Wagon (S210) 1996-1999
E SERIES Station Wagon (S124) 1993-

OEM NO : 1243200489*

LINK STABILIZER BUSH

ME143



COMPATIBLE VEHICLES :

VITO / MIXTO Box (W639) 2003-
VITO Bus (639) 2003-
VIANO (W639) 2003-2010

OEM NO : 6393260616*

BUSH FOR LINK STABILIZER, REAR

ME146-K



COMPATIBLE VEHICLES :

E SERIES (W124) 1993-1995
E SERIES (W210) 1998-2002

OEM NO : 1243200489*

AXLE BUSHING

ME1012



COMPATIBLE VEHICLES :

E SERIES (W124) 1993-1995

OEM NO : 1243524165, 1243527765, A1243524165, A1243527765

MOUNTING, AXLE BRACKET

ME137



COMPATIBLE VEHICLES :

V-CLASS (638/2) 1996-2003
VITO Box (638) 1997-2003
VITO Bus (638) 1996-2003
VITO Furgonato (638) 1997-2003

OEM NO : 6383170912, 6383170312

RUBBER MOUNTING FOR SHOCK ABSORBER,

ME078



COMPATIBLE VEHICLES :
T2 1986-1994
AXOR 2004-
ACTROS 1996-

OEM NO : 0003234385

RUBBER MOUNTING FOR SHOCK ABSORBER,

ME079



COMPATIBLE VEHICLES :
SPRINTER 4-t Pianale piatto/Telaio
(904) 1996-2006
SPRINTER 4-t Furgonato (904) 1996-
2006
SPRINTER 4-t Autobus (904) 2000-

OEM NO : 0003237885

SHOCK ABSORBER BUSHING,REAR

ME080



COMPATIBLE VEHICLES :
E SERIES (W124) 1993-1995
190 (W201) 1986-1993

OEM NO : 2013261858, 2013261900*, A2013261900*, 1243200031*,

SHOCK ABSORBER BUSHING,REAR, UPPER

ME081



COMPATIBLE VEHICLES :
VIANO (W639) 2003-2010

OEM NO : 0003201544

SHOCK ABSORBER BUSHING, REAR

ME089



COMPATIBLE VEHICLES :
E SERIES (W210) 1998-2002

OEM NO : 2103261900*, A2103261900*, 2103200231*,

RUBBER MOUNTING FOR REAR SPRING, NEW

ME061



COMPATIBLE VEHICLES :
T1 Pianale piatto/Telaio (601) 1977-
1996
T1 Furgonato (601) 1982-1996
T1 Autobus (602) 1989-1996
T1 Autobus (601) 1977-1996

OEM NO : 6023240050

RUBBER BUSH FOR REAR SPRING, OLD MODEL

ME062



COMPATIBLE VEHICLES :
T1 Pianale piatto/Telaio (601) 1977-
1996
T1 Furgonato (601) 1982-1996
T1 Autobus (602) 1989-1996
T1 Autobus (601) 1977-1996

OEM NO : 0003210350, 0003210050, 0003210150, A0003210050,

RUBBER MOUNTING FOR REAR SPRING, LONG

ME063



COMPATIBLE VEHICLES :
SPRINTER 2-t Autobus (901,902) 1995-
2000
SPRINTER 2-t Furgonato (901,902)
1995-2006
SPRINTER 2-t Pianale piatto/Telaio

OEM NO : 9013240050

RUBBER MOUNTING FOR REAR SPRING, THICK

ME065



COMPATIBLE VEHICLES :
SPRINTER 4-t Pianale piatto/Telaio
(904) 1996-2006
SPRINTER 4-t Furgonato (904) 1996-
2006
SPRINTER 4-t Autobus (904) 2000-

OEM NO : 9013240250

BUSHING FOR SPRING,REAR

ME066



COMPATIBLE VEHICLES :
T2 1986-1994

OEM NO : 3193240750

SPRING SEAT FOR PLASTIC LEAF SPRING

ME090



COMPATIBLE VEHICLES :
SPRINTER 3,5-t Panelvan/Van (906)
2006-

OEM NO : 9063220019

STRUT MOUNTING, FOR LEAF SPRING FRONT

ME091



COMPATIBLE VEHICLES :
SPRINTER 3,5-t Panelvan/Van (906)
2006-

OEM NO : 9063220619

CAP, FUEL OVERFLOW

M16



COMPATIBLE VEHICLES :
W115 1968-1977
C SERIES (W202) 1993-2000
COUPE (C123) 1977-1985
E SERIES (W124) 1993-1995
E SERIES Combi (S210) 1996-

OEM NO : A0009871145, 0009871145, 068130229A, 68130229,

FREEZE PLUG, 25MM

ME085



COMPATIBLE VEHICLES :
VITO Bus (638) 1996-2003
VITO Box (638) 1997-2003
V-CLASS (638/2) 1996-2003
T2 1986-1994
T1 Pianale piatto/Telaio (601) 1977-

OEM NO : 4039970620, 000443025003, 0607767, 5607733,

FREEZE PLUG, 34MM

ME086



COMPATIBLE VEHICLES :
VITO Bus (639) 2003-
VITO Box (638) 1997-2003
VARIO 1996-
T2 1986-1994
T1 Pianale piatto/Telaio (601) 1977-

OEM NO : 4039970420, 000443034002, 11056093, 05073860AA,

RUBBER MOUNTING, REAR

ME163



COMPATIBLE VEHICLES :
A-SERISI (W168) 1997-2004

OEM NO : 168 351 01 42, 168 350 14 08, A1683501408,

RUBBER MOUNTING, REAR

ME164



COMPATIBLE VEHICLES :
A-SERISI (W168) 1997-2004

OEM NO : 1683501308, 1683501808, 1683510242, 1683511142,

COOLANT TUBE (12 MM)

ME167



COMPATIBLE VEHICLES :
S SERIES (W220) 1999-2002
G SERIES (W461) 1989-
E-SERISI (W210) 1995-2002
C SERIES (W203) 2000-2007
C-SERIES Coupe (CL203) 2001-2004

OEM NO : 611 203 01 08

INTAKE HOSE 67,5 MM

ME168



COMPATIBLE VEHICLES :
SL (R129) 1993-2001
124 Coupe (C124) 1992-1993
124 T-Model (S124) 1986-1993
C-SERISI (W202) 1993-2000

OEM NO : 1041410990

GASKET

ME173



COMPATIBLE VEHICLES :
G-SERISI (W463) 1989-
G-CLASS (W460) 1979-1993
E-CLASS (W124) 1993-1996
G SERIES (W461) 1989-

OEM NO : 6010160163, A6010160163

SHAFT BELLOWS

ME176



COMPATIBLE VEHICLES :

SPRINTER 5-t Platform şasi (B905)
2001-2006
SPRINTER 4-t Platform şasi (B904)
1996-2006
SPRINTER 4-t Panelvan/Van (B904)

OEM NO : A903 410 00 10*, 903 410 00 10*, 903 410 00 10 S1, 2D0

Note

A series of horizontal dotted lines for writing notes, spanning the width of the page.

Note

A series of horizontal dotted lines for writing notes, spanning the width of the page.

www.oksankaucuk.com.tr



**one of the biggest manufacturers
of automotive industry**

📍 Kayapa Organize Sanayi Bölgesi Kayapa Sanayi Bulvarı
No: 25/1 Nilüfer - Bursa / Türkiye

☎ +90 (224) 483 41 27

✉ info@oksankaucuk.com.tr